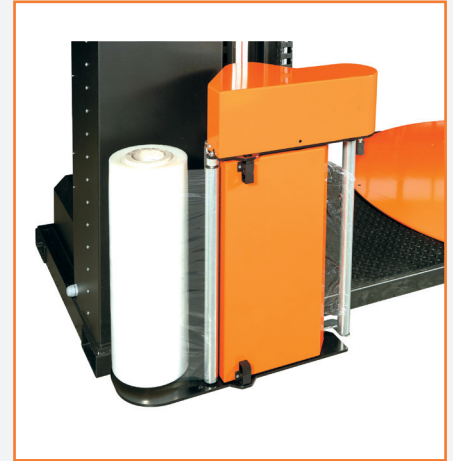


# Darwin: the mast.



## The first step toward packaging evolution.

Try to imagine a screw, ready to transform itself in a car to lead you anywhere you want: this is EvoPac Darwin.

EvoPac Darwin it's our premium entry level machine. It features a **unique** telescopic-mast solution, an high-tech juice that raises up together with the carriage in order to save a lot of space (just 1381 mm height when turned off), to wrap smoother as ever and to give more value to your time! Once ordered, the machine reach your wrapping area already **fully assembled** and ready to work: just plug in and wrap! Fitted with high quality components, EvoPac Darwin can be tailored as you want to meet your requirement. Design visionary, wrap concrete.

### Technical data

Height	1381 mm
Width	1500 mm
Length	2805 mm
Turntable height	72 mm
Weight	450 kg
Power supply	230 VAC
Power absorption	0,75/1Kw

### Main specifications

Maximum height of the pallet: 2250 mm

Loading plate: 1500 mm

Maximum loading weight: 1200 kg

Frequency controller for carriage speed management

Frequency controller for turntable speed management

Electromagnetic brake for film stretching

Photocell for pallet height detection

Safety stop at the base of the carriage

Stop at 0 position

6 working cycles

Storage of 32 end user programs

Wrapped pallet counter

Receiver for infrared/radio control

Autodiagnostic

3 working modes: semi-manual  
semi-automatic  
fixed height

2 years warranty

### Main options

Power pre-stretch

Power pre-stretch auto cut off system

Adjustable power pre-stretch

1650 mm turntable

1800 mm turntable

3000 mm max wrapping height

2000 kg max pallet weight

Remote control

Ramp

Pit frame

Photocell for dark loads

Safety fences

**EvoPac**  
Design visionary, wrap concrete



**EvoPac S.r.l.**

Via Calcinaro, 2071  
47521 Cesena (FC) - Italy  
T +39 (0)547 63 01 52  
E [info@evopac.com](mailto:info@evopac.com)  
[www.evopac.com](http://www.evopac.com)  
P.IVA/Cod. Fisc. 04198700405